

Street Smarts Platinum Edition™ Version 5.0

STREET LEVEL MAPS FOR U.S.A., CANADA

GEO-FENCING

CUSTOM ROADS AND REPORTS

GOOGLE EARTH INTERFACE



- ▲ Supports Windows 2000, XP, Vista, Windows 7
- ▲ Street level maps for the entire United States, PR, British Islands (Canadian mapping version available)
- ▲ Network compatible when used with Street Smarts Server™ version 5
- ▲ Advanced Geo-fencing
- ▲ Over-the-speed-limit indicator
- ▲ Ability to add custom streets, roads and highways
- ▲ Supports ESRI™ shape file overlay import
- ▲ Built-in report editor/viewer
- ▲ Record and Playback of vehicle routes

Street Smarts Platinum Edition™ version 5.0

Pyramid Communications Street Smarts Platinum version 5 **runs on a PC** running Windows 2000, XP, Vista or Windows 7, allowing the dispatcher to **monitor vehicle location and status information** from the mobile units.

The **Street Smarts Platinum version 5** works exclusively with the Pyramid Communications model 2017 Merlin Automatic Vehicle Location equipment, 2018 Centry II Automatic Vehicle Location equipment, the 2012 and 3012 Mobile Data Terminals. The **software program** includes **detailed street level map databases** for the entire United States and Canada.

Operation

The Street Smarts Platinum version 5 mapping software program **allows the dispatcher to visually locate each vehicle on a map**, providing street address, vehicle speed, vehicle ID, and I/O **status information to the dispatcher** for each vehicle displayed.

Geo-fencing allows the dispatcher to **define geographic boundaries** then **receive advisories** when the vehicle arrives or leaves these areas. In addition, the over-the-speed-limit indicator **will notify the dispatcher** when a vehicle exceeds a pre-determined speed.

Each event or location sent by the mobile unit is kept in an annual log **data base**. Report features **include vehicle, time, date, status, heading and speed information**. Built in distance counters and address lookup **help dispatcher** give better direction to drivers.

Multiple work stations can be networked with the addition of the Street Smarts Server version 5.

714 901-5462
www.pyramidcomm.com



Specifications **Street Smarts**



Single Workstation

Street Smarts Platinum™ version 5 can be configured as a stand alone application, connecting directly to a single base radio through a 2016 modem.

Networked Workstations

When 2 or more positions need access to the fleet, Street Smarts Platinum version 5 can be configured as the client software on a local area network with Street Smarts Server version 5 acting as the central gateway. Street Smarts Server version 5, running on a separate dedicated PC, connects directly with up to (16) 2016 modems, as well as a static IP address for Centry II applications. Street Smarts Server version 5 can support up to 50 workstations. Street Smarts Server's SmartSync™ protocol allows automatic synchronization of server database with client database to ensure up to date reports at each client workstation.

Recommended Minimum System Requirements

- Pentium 4 or higher processor 1 GHz or faster
- Windows 2000, XP, Vista or Windows 7 OS
- Internet connection (required for registration only)
- Network connection (required if using Street Smarts Server)
- 512 MB of DRAM
- 1.5 GB of free hard disk space
- CD ROM Drive
- 1 Serial RS-232 port
- 17" SVGA monitor or larger
- Video card capable of supporting 1024 x 768 or higher screen resolution
- Dual monitor video card if operating dual display configuration
- Keyboard
- Mouse

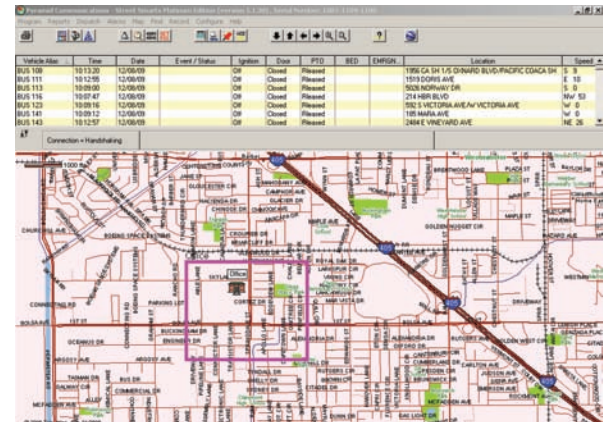
Benefits

- Real time monitoring of entire fleet
- Mileage reports for improved maintenance
- Driver timecard reports improves efficiency / reduces overtime
- Eliminate lost drivers
- Aids in route development

Date	VehicleID	Job	Status	Time	Start Date	End Date	Back To	Back To	Back To	Back To	Back To	Back To	Back To	Back To	Back To	Back To	Back To	Back To	Back To	Back To	Back To
2006-12-18	1500	100	Leaving	09:49:52	12/18/2006	12/18/2006	12/18/2006	12/18/2006	12/18/2006	12/18/2006	12/18/2006	12/18/2006	12/18/2006	12/18/2006	12/18/2006	12/18/2006	12/18/2006	12/18/2006	12/18/2006	12/18/2006	12/18/2006
2006-12-18	1500	100	Checked	09:50:52	12/18/2006	12/18/2006	12/18/2006	12/18/2006	12/18/2006	12/18/2006	12/18/2006	12/18/2006	12/18/2006	12/18/2006	12/18/2006	12/18/2006	12/18/2006	12/18/2006	12/18/2006	12/18/2006	12/18/2006

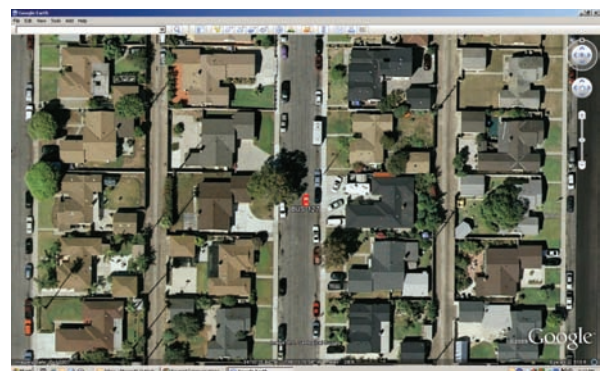
Built-in Report Viewer

- Custom sort by user defined date fields
- Print custom reports by driver
- Export data to MS Excel for detailed analysis



Advanced Geo-fencing

- Ability to alert dispatch on entry, exit or both
- Flexible – Up to 500 user defined Geo-fences



Google Earth

- Easily interfaces with Google Earth satellite view